



### Construction

Close-coupled peripheral pump (regenerative pump) with turbine impeller. Compact, patented construction with movable casing cover motor side (replaceable in case of wear)  
Protected against water entering the motor from outside.

### Applications

For clean liquids without abrasives, without suspended solids, non-explosive, non-aggressive for the pump materials.  
For increasing network pressure (follow local specifications).  
For the reduced dimensions, these pumps are very well suitable to be mounted in cooling and air-conditioning machines and equipments, circulation.

### Operating conditions

Liquid temperature up to 60 °C.  
Ambient temperature up to 40 °C.  
Total suction lift up to 7 m.  
Continuous duty.

### Motor

2-pole induction motor, 50 Hz ( $n = 2900$  rpm).

**CT 61:** three-phase 230/400 V  $\pm$  10%.

**CTM 61:** single-phase 230 V  $\pm$  10%, with thermal protector.  
Capacitor inside the terminal box.

Insulation class F.

Protection IP 54.

Constructed in accordance with: EN 60335-2-41.

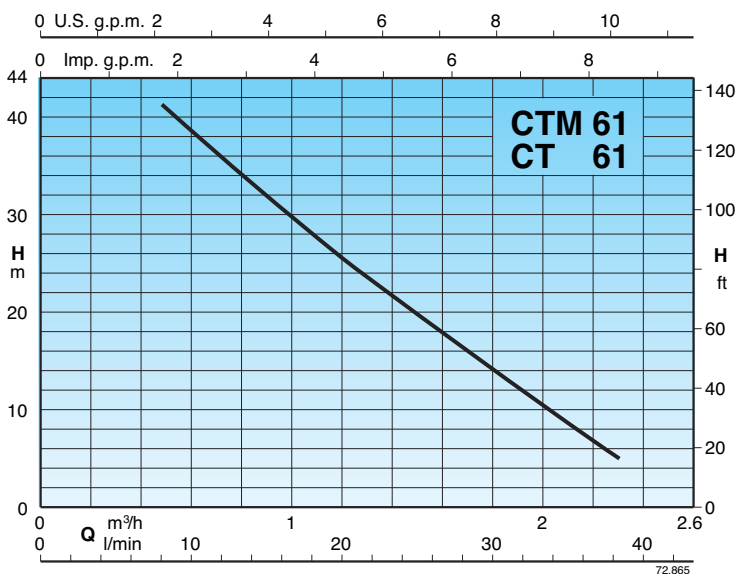
### Materials (wetted parts)

| Components              | CT 61                        | B-CT 61                      |
|-------------------------|------------------------------|------------------------------|
| Pump casing             | Cast iron<br>GJL 200 EN 1561 | Bronze<br>G-Cu Sn 10 EN 1982 |
| Casing cover motor side | Brass P- Cu Zn Pb 2 UNI 5705 |                              |
| Impeller                | Brass P- Cu Zn Pb 2 UNI 5705 |                              |
| Shaft                   | Chrome steel AISI 430        |                              |
| Mechanical seal         | Carbon - Ceramic - NBR       |                              |

### Special features on request

- Other voltages.
- Frequency 60 Hz (as per 60 Hz data sheet).
- Special mechanical seal.

### Coverage chart $n \approx 2900$ rpm



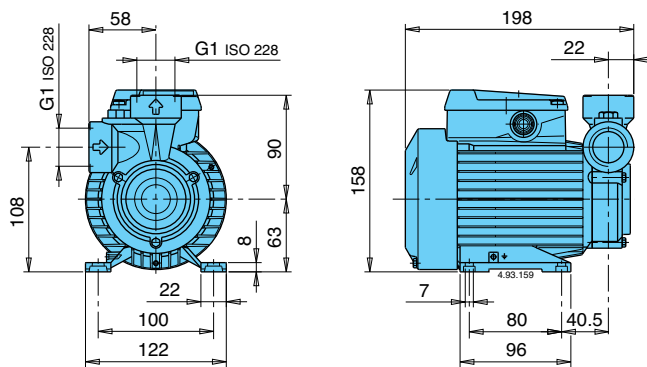
### Performance $n \approx 2900$ rpm

| 3~             | 230V 400V |     | 1~              | 230V | P <sub>2</sub> |      | Q          | Flow Rates        |      |      |      |      |     |     |      |
|----------------|-----------|-----|-----------------|------|----------------|------|------------|-------------------|------|------|------|------|-----|-----|------|
|                | A         | A   |                 |      | kW             | HP   |            | m <sup>3</sup> /h | 0,48 | 0,6  | 0,75 | 0,96 | 1,2 | 1,5 | 1,89 |
| <b>CT 61</b>   | 1,9       | 1,1 | <b>CTM 61</b>   | 2,5  | 0,33           | 0,45 | <b>H m</b> | 41                | 38,5 | 35,5 | 31   | 25,5 | 19  | 11  | 5    |
| <b>B-CT 61</b> |           |     | <b>B-CTM 61</b> |      |                |      |            |                   |      |      |      |      |     |     |      |

H Total head in m.

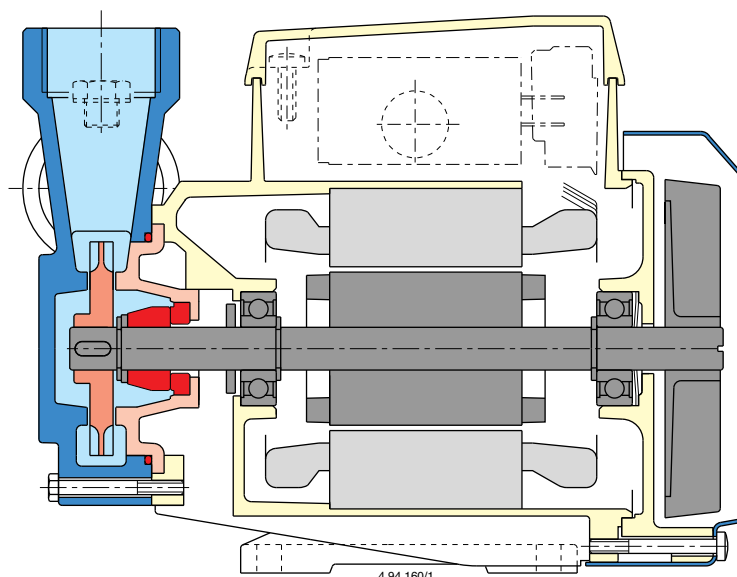
P<sub>2</sub> Rated motor power output.

### Dimensions and weights



CT 61 **4,9** kg  
 CTM 61 **5** kg  
 B-CT 61 **5,1** kg  
 B-CTM 61 **5,2** kg

### Features



Patented